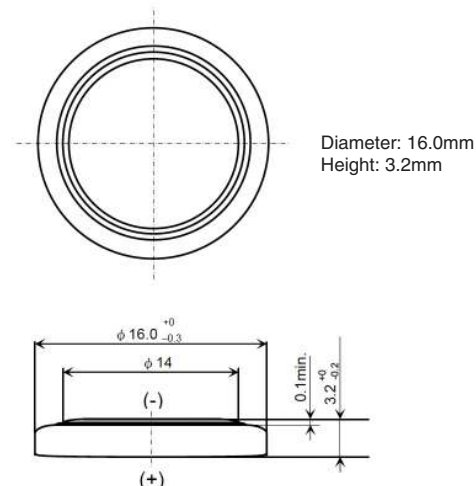


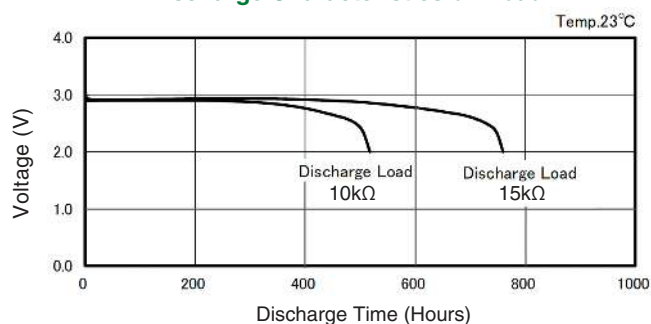
Description	: Flat Lithium Battery
Chemical System	: Lithium Manganese Dioxide
Nominal Voltage	: 3.0 Volts
Nominal Capacity	: 140mAh
Dimensions	: $\phi 16.0 \times 3.2\text{mm}$
Average Weight	: 1.9 g
Application	: Remote keyless entry, computer memory back up
Operating temperature	: -10°C to $+60^{\circ}\text{C}$

Model No.: **CR1632**

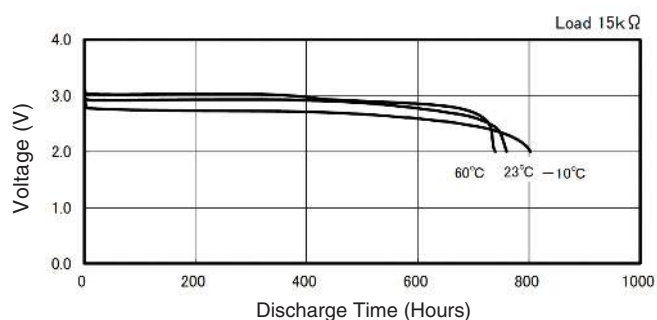
Dimension Drawing



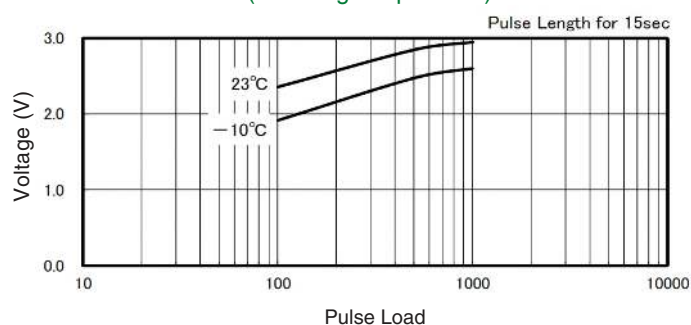
Discharge Characteristics on Load



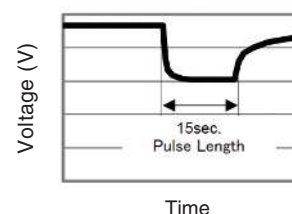
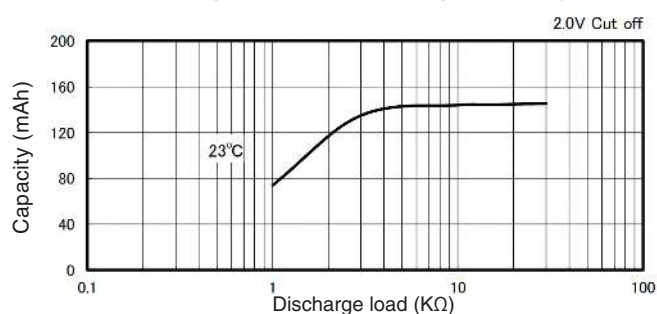
Discharge Characteristics on Temperature



Discharge Characteristics on Pulse Load (Discharge depth 40%)



Discharge Load vs. Discharge Capacity



The information (subject to change without prior notice) contained in this document is for reference only and should not be used as a basis for product guarantee or warranty. For applications other than those described here, please consult your nearest GP Sales and Marketing Office or Distributors.