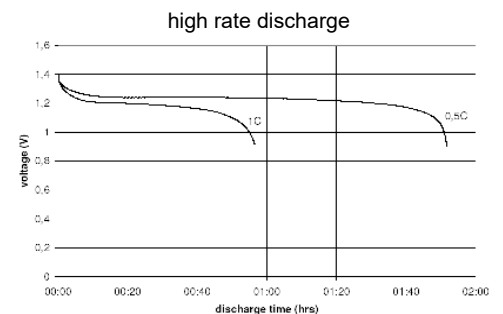
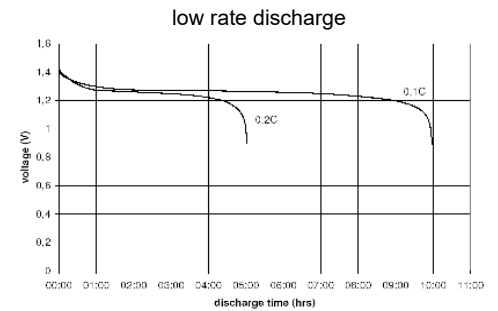
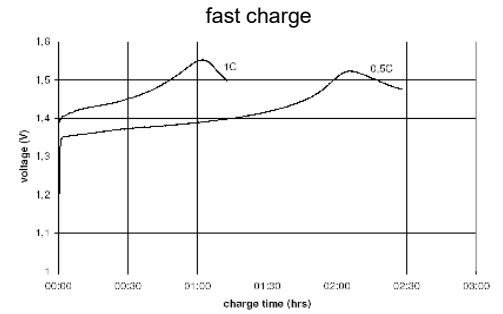
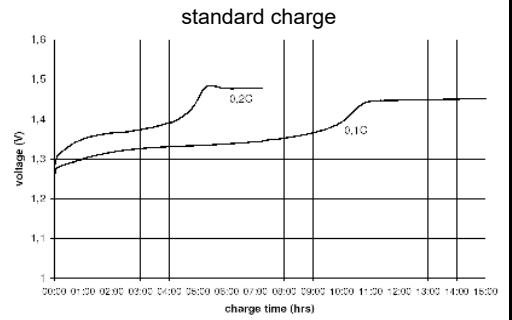


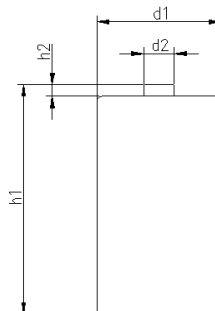
<b>cell type:</b>	NiMH	<b>Conditions</b>
<b>cell size:</b>	D	
<b>nominal voltage:</b>	1.2 V	
<b>max. charge voltage:</b>	1.5 V	at standard charge (0.1C / 20°C)
<b>capacity</b>		
nominal:	8500 mAh	discharge at 0.2C
minimum:	8500 mAh 8000 mAh	discharge at 0.2C discharge at 1C
		1.0V end discharge voltage ta: 20°C
<b>max. continuous discharge current:</b>	8500 mA	ta: 0...45°C
<b>charge</b>		
standard charge:	current 850 mA	time 14....16hrs
quick charge:	2550 mA	4hrs
fast charge:	4250 mA	2.3hrs
recommended charge termination control parameters:	0...5 mV 0.8...1 °C 45...50 °C	- ΔV (-deltaV) temperature rise per minute TCO (temperature cut off)
trickle charge current:	50...250 mA	(recommended)
continuous overcharge: (less than 1 year)	≤ 850 mA	no conspicuous deformation no leakage
<b>internal resistance:</b> (impedance)	≤ 12 mΩ	at 1KHz battery fully charged
<b>life expectancy:</b>	≥ 500 cycles	acc. IEC standard
<b>self discharge</b>		
charge retention:	≥ 80 %	after 12 months storage at 20°C
<b>initial capacity:</b>	≥ 5500 mAh	within 30 days after delivery discharge at 0.2C
<b>ambient temperature range:</b>	0...45 °C 10...40 °C 0...45 °C - 20...50 °C - 20...40 °C - 20...30 °C	standard charge fast charge discharge storage (≤3months) storage (≤6months) storage (≤24months)
QCT1:	20/8000/15	
QCT2:	30/7800/15	

### Diagrams



### mechanical specifications

cell dimensions		
diameter d1:	32.8 - 1.0	mm
diameter d2:	max. 9.5	mm
height h1:	61.5 - 2.0	mm
height h2:	min. 1.5	mm
weight:	145 ± 7	g
blister card dimensions: 123 x 85 mm		
blister card weight (incl. batteries): 300 g		



	<b>ANSMANN Specifications for model:</b>	<b>D - 8500mAh low self discharge 2pcs blister package</b>
	data sheet no. / part no.	5035362
	supplier no.	702069
	author / date	TG / 12.06.2018