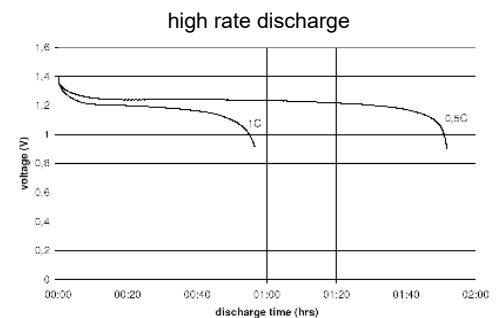
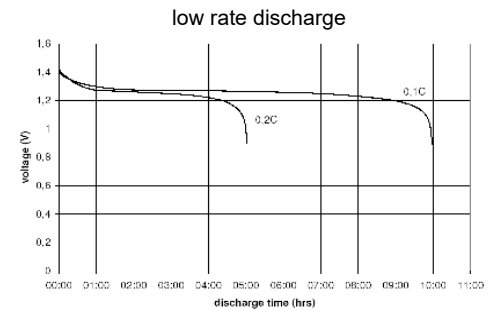
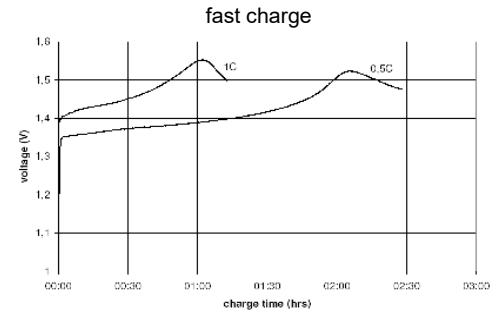
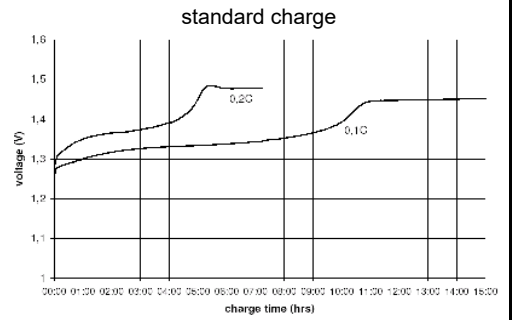


		Conditions
<b>cell type:</b>	NiMH	
<b>cell size:</b>	AA	
<b>nominal voltage:</b>	1.2 V	
<b>max. charge voltage:</b>	1.5 V	at standard charge (0.1C / 20°C)
<b>capacity</b>		
nominal:	2850 mAh	discharge at 0.2C
minimum:	2650 mAh	discharge at 0.2C
	2400 mAh	discharge at 1C
		1.0V end discharge voltage
		ta: 20°C
<b>max. continuous discharge current:</b>	5000 mA	ta: 0...45°C
<b>charge</b>		
standard charge:	current 265 mA	time 14...16hrs
quick charge:	750 mA	4hrs
fast charge:	2650 mA	1.1hr
recommended charge termination control parameters:	0...5 mV 0.8...1 °C 45...50 °C	- ΔV (-deltaV) temperature rise per minute TCO (temperature cut off)
trickle charge current:	10...30 mA	(recommended)
continuous overcharge: (less than 1 year)	≤ 100 mA	no conspicuous deformation no leakage
<b>internal resistance:</b> (impedance)	≤ 35 mΩ	at 1KHz battery fully charged
<b>life expectancy:</b>	≥ 500 cycles	acc. IEC standard
<b>self discharge</b>		
charge retention after 360 days storage at 20°C:	≥ 40 %	of minimal battery capacity; at 0.2C discharge to EV 1.0V
subsequent capacity:	≥ 1060 mAh	
<b>initial capacity:</b>	≥ 2000 mAh	within 30 days after delivery discharge at 0.2C
<b>ambient temperature range:</b>	0...45 °C 10...40 °C - 20...65 °C - 20...50 °C - 20...45 °C - 20...35 °C	standard charge fast charge discharge storage (≤1month) storage (≤6months) storage (≤12months)

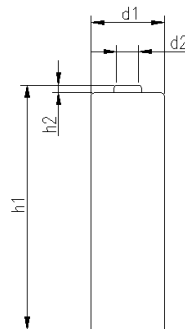
### Diagrams



QCT1:	20/2500/40
QCT2:	30/2350/45

### mechanical specifications

cell dimensions		
diameter d1 (incl. label):	14.5 - 0.7	mm
diameter d1 (bare cell):	14.3 - 0.7	mm
diameter d2: max.	5.5	mm
height h1:	50.5 - 0.5	mm
height h2: min.	1.2	mm
weight:	31 ± 2	g



	<b>ANSMANN Specifications for model:</b>	<b>NiMH Battery</b>
		<b>AA - 2850mAh reduced self discharge</b>
	data sheet no. / part no.	
	supplier no.	701372
author / date	TG / 17.12.2019	